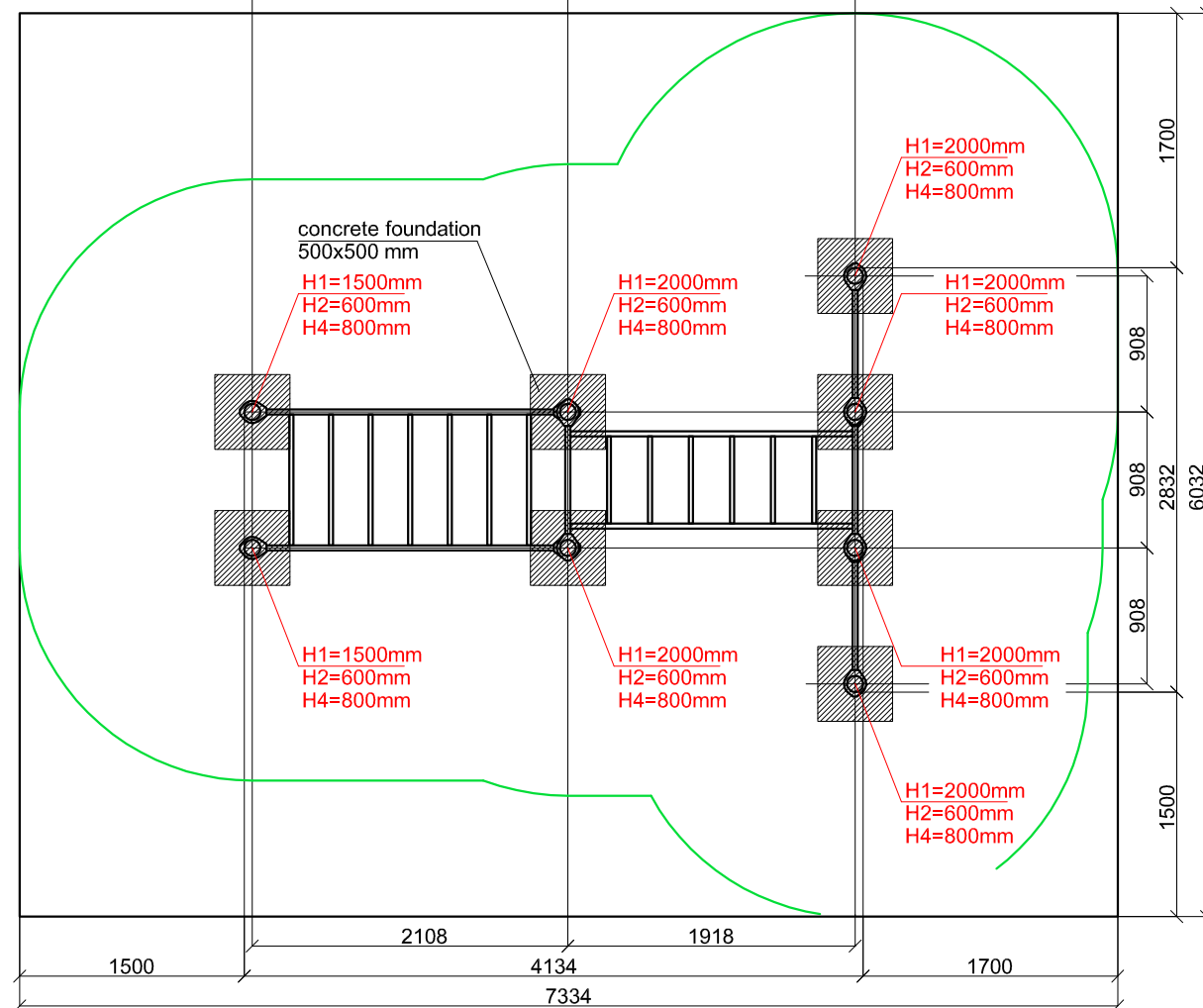
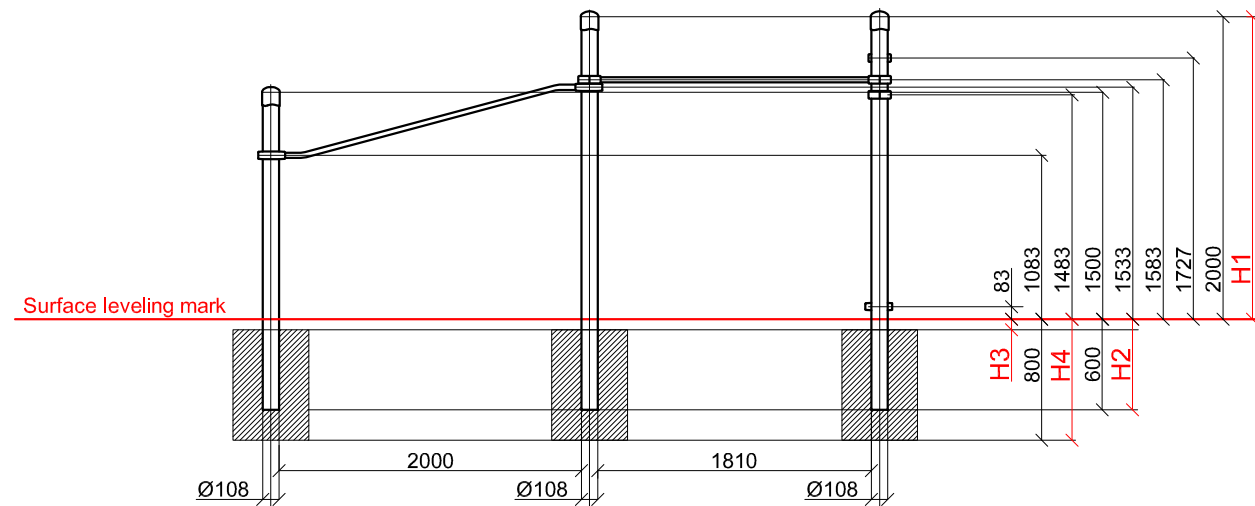
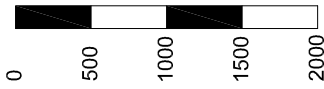


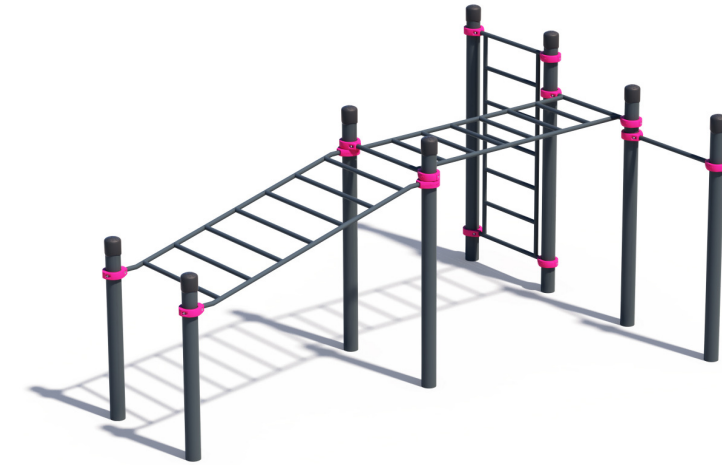
SCALE 1:50



LTD "KENGURU PRO"
 Address: Lauteres street 4, Riga, Latvia, LV-1002
 VAT Reg. No. 40103750152
 Bank: LUMINOR A/S , SWIFT: RIKOLV2X ,
 Bank Account: LV65RIKO0002930161161
 e-mail: info@kengurupro.eu
 www.kengurupro.eu

K-036_kids

Two level monkey bar, swedish wall and pull-up bar.



The complex consists of eight vertical columns with different height , one crossbar with the length of 800mm, one horizontal monkey bar, one inclined monkey bar and one Swedish wall. Length of the monkey bar is 1952 mm for the horizontal and 2000mm for the inclined. Width of the classic monkey bars is 800mm, distance between the crossbars is 274mm. Width of the inclined monkey bar is 942mm, distance between the crossbars is 274mm. Height of the Swedish wall is 1678mm, width 800mm, distance between the crossbars is 274mm. The complex is secured together with aluminium clamps.

Installation instructions:

- Choose a suitable underground for the unit according EN1176-1 annex I table I.1
- Prepare the construction pit with a drilling machine or other devices.
- Before pouring the concrete all structures elements must be leveled and fixed.
- Complex elements must be fixed and bolted together with metal clamps.
- Ready-made C25 concrete should be used.
- Crossbars installation height can be changed according to customer's wishes.
- Approximately 0,15m³ concrete is needed for each spot foundation.
- Under the structures we recommend to install absorbing rubber cover.

The size of the hole for the foundation is depending on the consistency of the ground. The dimensions mentioned above are applicable for normal conditions with firm ground. If the ground is extremely soft, a much bigger foundation is needed. Use only appropriate material and follow the installation instructions closely!!!

Foundation plan and area of movement				Technical information		
Foundation when using Shock absorbing underground (syntethic – rubber granulates)		Beveling of foundation when using loose filling material		width:	2832 mm	
				height:	2050 mm	
				length:	4134 mm	
				largest part:	2650 mm	
				weight:	275 kg	
				floor space required	7334 x 6032 mm	
				pipe measurements:	diameter:	wall thickness:
					108 mm	3.2 mm
					33.7 mm	3.2 mm
				metal parts:	steel, galvanized, powder coated RAL 7016 (anthracite grey)	
				metal clamps:	aluminium, powder coated, RAL 4010 (Telemagenta)	
				bolts for metal clamps	stainless steel, Pin Hex Button Head Security Screws M10	
				max. free fall height:	< 1727 mm	EN1176-1 annex I table I.1
				user age:	3-14 years	
				certificates:	TÜV Rheinland InterCert Kft.	

