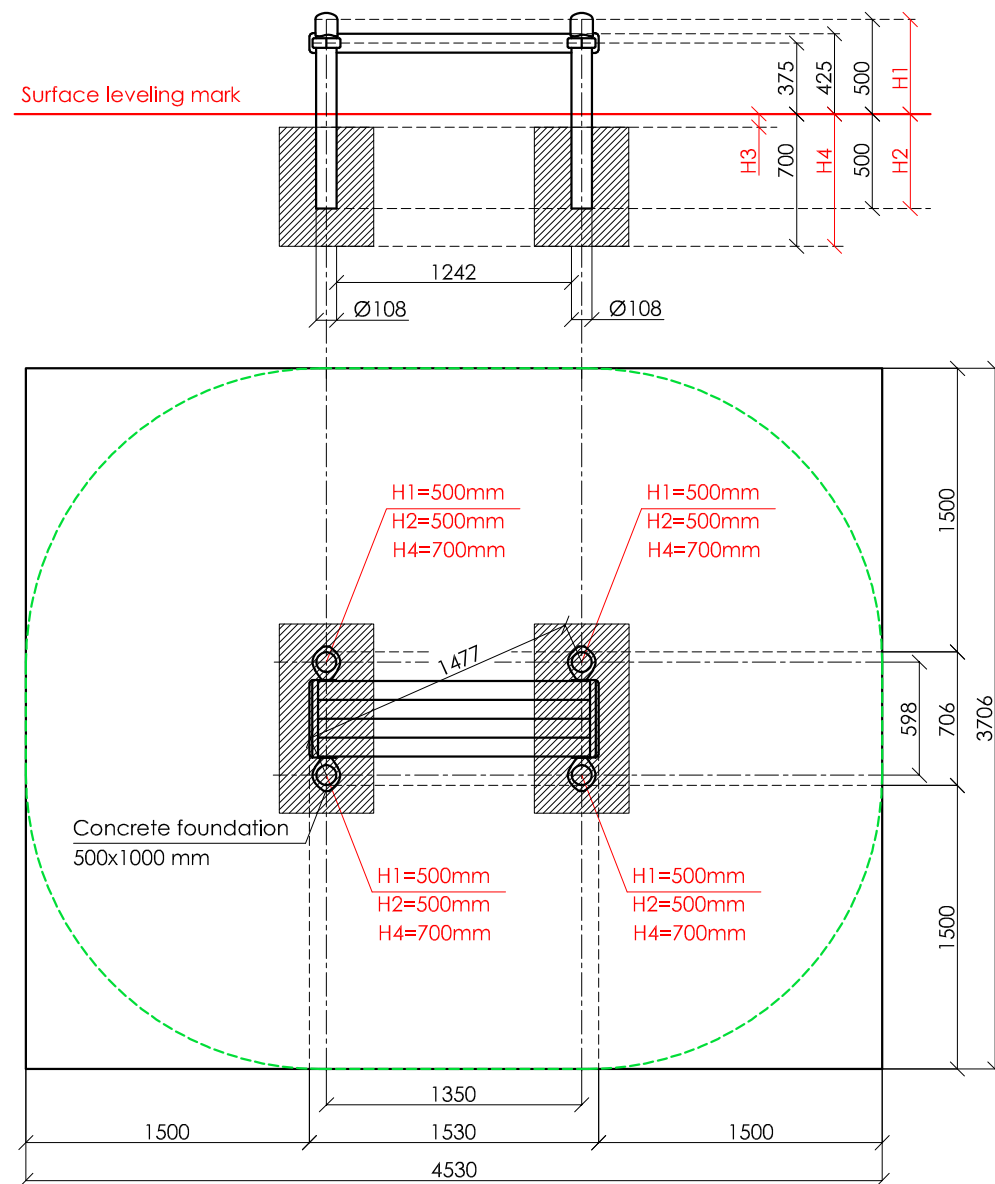
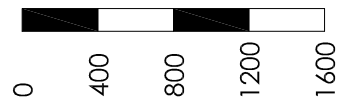


SCALE 1:40



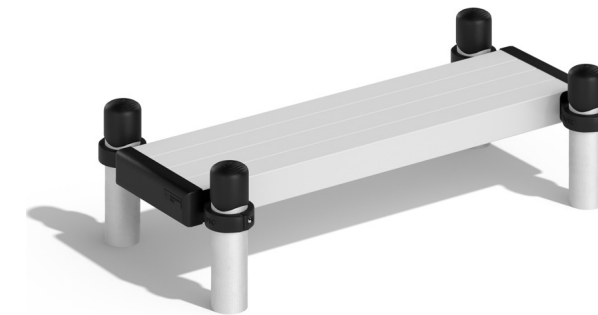
**KENGURU  
PRO**

**"KENGURU PRO" LTD**

Address: Lauteres street 4, Riga, Latvia, LV-1002  
 VAT Reg. No. 40103750152  
 Bank: A/S Luminor bank, SWIFT: RIKOLV2X,  
 Bank Account: LV65RIKO0002930161161  
 e-mail: info@kengurupro.eu  
 www.kengurupro.eu

K-015

Bench



The construction consists of four vertical columns and aluminium bench with the length of 1500 mm, width of 400 mm. The distance between the columns is 598 mm. The standard height of the bench is 425 mm. Construction is secured together with siluminium clamps. Weight- 40,0 kg.

**Installation instructions:**

- Choose a suitable underground for the unit (see page 2, table 2)!
- Prepare the construction pit with a drilling machine or other devices.
- Before pouring the concrete all structures elements must be leveled and fixed.
- Complex elements must be fixed and bolted together with metal clamps.
- Ready-made C25 concrete should be used.
- Crossbars installation height can be changed according to customer's wishes.
- Approximately 0,15m<sup>3</sup> concrete is needed for each spot foundation.
- Under the structures we recommend to install absorbing rubber cover.

The size of the hole for the foundation is depending on the consistency of the ground. The dimensions mentioned above are applicable for normal conditions with firm ground. If the ground is extremely soft, a much bigger foundation is needed. Use only appropriate material and follow the installation instructions closely!!!

**Foundation plan and area of movement of the K-015 Bench**

Foundation when using Shock absorbing underground (synthetic - rubber granulates)		Beveling of foundation when using loose filling material	
H3	Drop height	H3	Drop height
40 mm	> 1.2.....1.4 m	20 cm	< 1.0 m
50 mm	> 1.5.....1.7 m	30 cm	< 2.0 m
60 mm	> 1.8.....2.0 m	40 cm	< 3.0 m
70 mm	> 2.1.....2.5 m		

**Technical information**

width:	706 mm	
height:	550 mm	
length:	1530 mm	
largest part:	1530 mm	
weight:	40,0 kg	
floor space required	4530 x 3706 mm	
pipe measurements:	diameter:	wall thickness:
	108 mm	3.0 mm
	33.7 mm	3.0 mm
columns Ø108mm:	anodized aluminium tube AW6060 (Silver color)	
elements:	stainless steel AISI 304, brushed surface	
metal clamps:	siluminium, powder coated, RAL 9005 (pure black)	
bolts for metal clamps	stainless steel, Pin Hex Button Head Security bolts M10	
bench beam measurements:	Height, width (mm)	Length (mm)
	100x100	1500
aluminium beams	silver color, anodized AW 6060, 2.0 mm	
max. free fall height:	< 425 mm	possible underground see DIN 79000:2012-05 Tab.2 or installation instructions
user height:	> 140 cm	
maximum user weight:	130 kg	
certificates:	TÜV Rheinland InterCert Kft.	

